

GNSS Receiver **T5Lite** Economical handheld RTK

T5Lite GNSS Receiver

T5Lite is a mini portable multifunctional GNSS receiver, a new generation of measurement engine supporting tilt measurement, built-in 4G Modem, Bluetooth and WIFI. It adopts a new appearance design, magnesium alloy structure and Linux operating system. It is an economical and portable geodesic GNSS receiver.

CHARACTERISTIC

Linux Intelligent System

ARM Cortex-A7 + Linux, the intelligent system platform, brings efficient computing and unlimited expansion of product functions to users.

Multi Constellation

With its 1408 channels, T5Lite provides an excellent on board real time navigation solution with high accuracy. All GNSS signals (GPS, GLONASS, BDS, GALILEO, QZSS, SBAS and IRNSS) are included.

Tilt Measurement

T5Lite has the IMU module. Fast initialization and up to 60° inclination.

Combined Antenna

The new four in one antenna integrates GNSS, WIFI, Bluetooth and 4G, with smaller volume and better signal.

4G Modem

T5Lite has an internal 4G Modem that operates with more cellular network signals, a fast internet connection is guaranteed.

Long Endurance

Built in high-capacity lithium battery ensures continuous working time of more than 16 hours under normal operation.

IP65 Design

Industrial design, solid magnesium alloy shell, in line with IP65 design requirements, safe and reliable.

T5Lite GNSS Receiver

Economical handheld RTK

main body Magnesium alloy
ABS/PC top cover

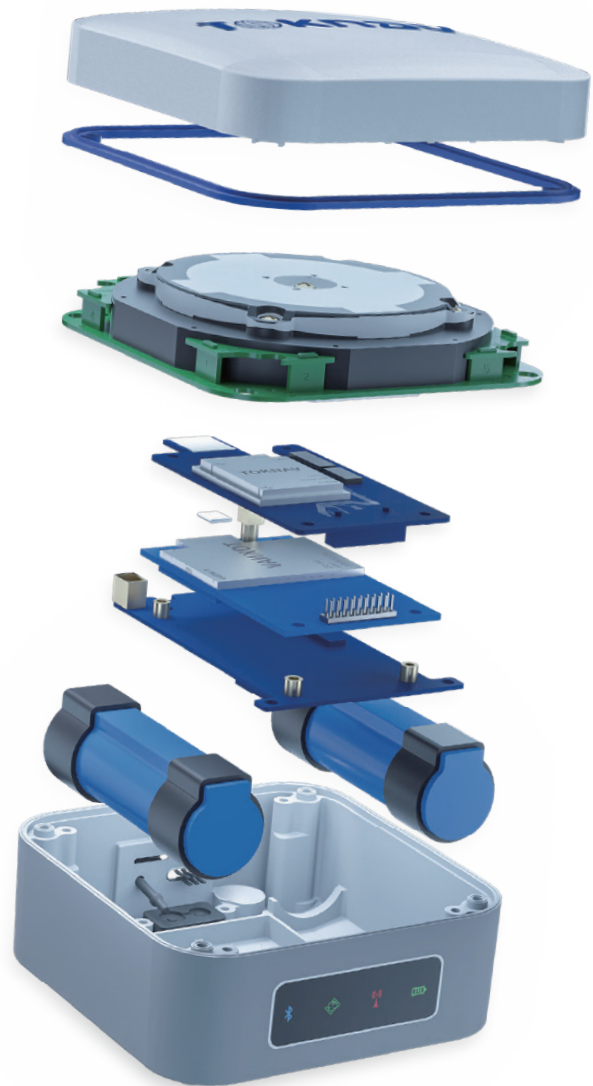
1408 Channel
GPS GLONASS BDS GALILEO
QZSS SBAS

32GB
storage

3.7V, 9600mAh
Over 16 Hours

Portable and smart
Weight 600g

IMU60 supported
Fast initialization



Economical handheld



HEIGHT	DIAMETER	WEIGHT
69mm	100.5mm	600g

10cm mini size, weighing only 600g.

Measure at will with IMU60

A 9600mAh battery, with a runtime of up to 16 hours.

SPECIFICATION

SYSTEM	
HARDWARE SYSTEM	ARM Cortex-A7 1.8GHz
OS	Linux
GNSS	
GPS	L1C/A, L1C, L2P(Y), L2C, L5
GLONASS	L1, L2, L3
BDS	B1I, B2I, B3I, B1C, B2a, B2b(PPP)
GALILEO	E1, E5a, E5b, E6(PPP)
OZSS	L1, L2, L5
SBAS	L1(PPP)
NavIC (IRNSS)	L5*(IRNSS support in future)
Channel	1408
Standard Output	NMEA-0183
Correction I/O Protocol	RTCM 3.X
Frequency	5Hz(max)
Reacquisition Time	<1s
Cold Start Time	<40s
ACCURACY	
SINGLE (RMS)	Horizontal: 1.5m / Vertical: 2.5m
DGPS (RMS)	Horizontal: 0.4m / Vertical: 0.8m
RTK (RMS)	Horizontal: \pm (8mm+1ppm) Vertical: \pm (15mm+1ppm)
Timing Precision (RMS)	20ns
Static Mode Precision (RMS)	Horizontal: \pm (2.5mm+1ppm) Vertical: \pm (5mm+1ppm)
Velocity Estimation (RMS)	0.03m/s
Tilt Correction (Within 60°)	<2cm
SYSTEM PLATFORM	
Bluetooth	BR+EDR+BLE
WIFI	802.11 b/g/n
Network	LTE FDD: B1/2/3/5/8 LTE TDD: B38/39/40/41 GSM: 900/1800MHz
Storage	32GB Storage

INDICATOR	
Bluetooth Indicator	Show Bluetooth status
Satellite Indicator	Show position status
Data link Indicator	Show differential signal status
Power Indicator	Show power status
BATTERY	
Battery	3.7V, 9600mAh
Work time	More than 16 hours (Typical, Rover, GSM) The static working mode supports continuous data collection for 24 hours
Charge	MTK PE+1.1/2.0 9V/2A USB PD 12V/1.25A 5V/3A (Support fast charging adapter and adaptively and dynamically adjust charging current)
ENVIRONMENT	
Work Temperature	-20°C~+60°C
Storage Temperature	-40°C~+85°C
Shock Resistance	Can withstand a 1.5m drop at normal temperatures
Protection Rating	IP65
PHYSICAL	
Materials	Magnesium alloy main body, ABS/PC top cover
Dimensions	100.5mm*100.5mm*69mm
Weight	600g
ACCESSORIES	
T5Lite Device	1 SET
USB power adapter	1 PCS
USB A To Type-C	1 PCS
CERTIFICATION	
Regulatory Compliance	CE, NGS CE

🌐 www.toknav.cn ✉ info@toknav.cn

Manufacturers may update parameters at any time, please refer to the latest product information.



Europe, North & South America
Tel & WhatsApp: +1 (323) 847-7713 (Ian)
Asia, Africa & Oceania
Tel & WhatsApp: +86 139 2607 5986 (Jeffrey)

Guangzhou Toksurvey Information Technology Co., Ltd
No. 9 Caipin Road, Building B, Room 801-6,
Huangpu District, Guangzhou, China