



Unmanned Surface Vehicle

Tboat20

Full-Function Professional USV

Tboat20 series Unmanned Surface Vehicle

The Tboat20 unmanned vessel platform is capable of meeting 99% of industry demands in aquatic operations. Its multifunctional design supports a wide range of application scenarios, including underwater full-terrain topography measurement, hydrographic flow measurement, underwater stratum monitoring, water quality sampling, environmental monitoring, water body apparent spectrum survey, and integrated air-land-water mobile monitoring of water environments. This platform achieves "one vessel, multiple applications," featuring high automation, strong disturbance resistance, and extensive hull expandability. It significantly enhances the efficiency and precision of unmanned aquatic operations, providing an efficient and reliable solution for intelligent water-based tasks.

CHARACTERISTIC

High-Precision Navigation System

The Tboat20 features full-system multi-frequency signal tracking, enabling its antenna to receive signals from all major global constellations including BDS, GPS, GLONASS, GALILEO, SBAS, and QZSS. This robust signal reception, processed by proprietary high-precision algorithms, ensures exceptional straight-line stability and steady operation.

High-intensity

It adopts a full-curved V-shaped hull, made of high-molecular polyester fiber and Kevlar fabric, with IP67 waterproof and dustproof rating. It is equipped with omnidirectional anti-collision strips, and the bow and hull bottom are reinforced with anti-collision design, which can adapt to complex water environments and is durable.

Long Endurance

It is equipped with brushless dual motors with a maximum power of 1200W and supports multiple speed modes. It is equipped with 33.6V/6Ah*2 dual rechargeable lithium batteries, with a cruising range of up to 8 hours, providing strong power and meeting the needs of long-term operations.

Convenient and Efficient

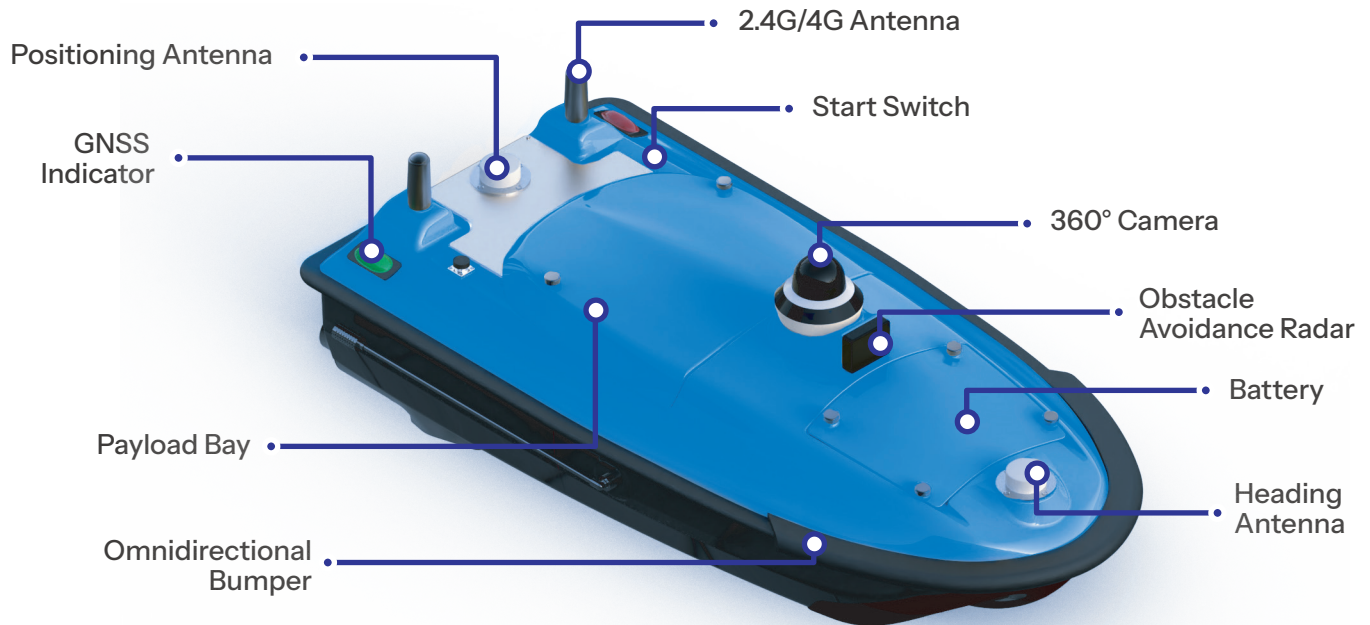
It is equipped with a one-button start system, and the balanced battery supply increases the cruising range by 20%. It is equipped with a Linux operating system, supports 4G/2.4G data communication, has a variety of interfaces, and is convenient for remote control. The operation data is displayed in real time.

One Boat for Multiple Purposes

Equipped with devices such as side-scan sonar, multibeam echo sounder, ADCP, and in-situ analyzer, it can carry out underwater topographic and geomorphic survey, hydrological flow measurement, water quality sampling, environmental monitoring and other operations, meeting 99% of the industry needs in water area operations and achieving "one boat for multiple uses".

Tboat20 series Unmanned Surface Vehicle

Full-Function Professional USV

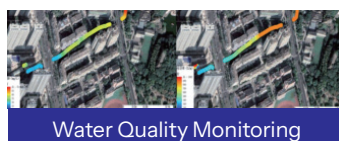


Application Scenarios

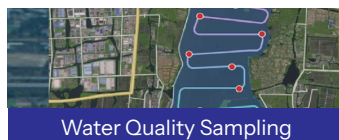
Tboat20-A



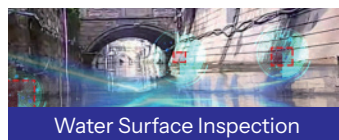
Tboat20-B



Tboat20-C



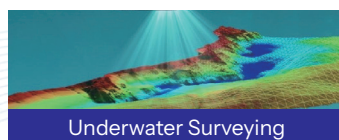
Tboat20-D



Tboat20-E



Tboat20-F



Hull: 12kg, Total Weight: 40kg

Maximum Payload: 50kg

33.6V 30Ah*2

4 hours per battery set(2m/s)
5 hours(1.5m/s)

360° Omnidirectional Night Vision Camera

One-touch Control

Manual/Auto/Hover/
Return-to-home modes

Automatic Shallow-water Tracking Reverse,
Radar-based Obstacle Avoidance

Maximum Speed 6 m/s

Rated Power 1200W
Rated 7000 RPM

SPECIFICATION

HULL

Hull Dimensions	1280*580*430mm
Material	Polyester carbon fiber Composite, Kevlar fabric
Draft	12 cm
Self-weight	Hull: 12kg, Total weight: 40kg (including base peripherals, boat controller, and battery)
Maximum Payload	50kg
Wave Resistance Rating	Wind force 4, wave height 3
IP Rating	IP67
GNSS	Built-in GNSS positioning and orientation dual antenna
Indicator Lights	Dual-color indicator lights display remote control signal status and GNSS positioning status
Video	360° omnidirectional night vision camera
Obstacle Avoidance Range	Pitching*Azimuth: 120°*120°, Range: 0.10~20m (Optional upgrade to 40m range)

POWER

Power Type	Electric
Motor Type	Brushless motor
Steering Type	Differential steering without servo, supports reverse
Motor Power	Rated Power 1200W
Motor Speed	Rated 7000 RPM
Motor Mounting Method	Plug-and-play design for easy replacement
Battery Specifications	33.6V 30Ah*2 rechargeable ternary lithium battery, 21700 cells
Battery Replacement	Supports hot-swap replacement without powering down
Operating Time	4 hours per battery set (2m/s) 5 hours (1.5m/s)
Range	Range at economical speed: 38km
Maximum Speed	6 m/s

DEPTH MEASUREMENT

Frequency	200 KHz
Beam Angle	5°±1°
Depth Range	0.15~300m (Extended range available as an option)
Resolution	1 cm
Stability Rate	±2 cm (CEP 0.95 @ 10 m)
Depth Measurement Accuracy	±1 cm + 0.1% D (Where D is the water depth value)
Supply Voltage	9V-18V
Sound Velocity Adjustment Range	0 m/s to 1700 m/s
Power Consumption	5-10W

REMOTE CONTROL

Dimensions	277*138*96mm
Display	Industrial touchscreen & sunlight-readable display Up to 1200 nits
Resolution	1920*1200
Memory	RAM: 4GB, Storage: 64GB
Frequency Band	2.400~2.483 GHz
Communication Range	Data transmission range: 3km, 4G range: unlimited
Battery Capacity	20000mAh
Operating Endurance	8 hours
Charging Power	18W fast charging, compatible with standard Type-C ports
Interfaces	PPM, RJ45, USB, Type-C, SIM card slot, TF card slot

CONTROL

Operating System	Linux
Base Station Communication	Radio (optional) & Network & CORS
Data Communication	4G & 2.4G & Radio (Optional)
Video Communication	4G & 2.4G
SIM Card Slot	Nano Card Slot
Interface	2x RJ45 Ethernet ports, 2x RS232 serial ports, 2x RS485 serial ports

POSITIONING

Satellite System	BDS (BDS-2: B1I, B2I, B3I; BDS-3: B1I, B3I), GPS (L1C/A, L2P, L2C), GLONASS (G1, G2), Galileo (E1, E5b), QZSS* (L1C/A, L2C), SBAS* (L1C/A), and other full-system multi-frequency signal tracking
Cold Start	<30s
Initialization Time	<5s (D<10km)
Single-point Positioning Accuracy	Horizontal ≤ 3m, Vertical ≤ 1.5m
DGNSS Positioning Accuracy	Horizontal: 40cm + 1ppm, Vertical: 80cm + 1ppm
RTK Positioning Accuracy	Horizontal: ± 8mm + 1ppm, Vertical: ± 15mm + 1ppm
CORS Differential Source	Supports network CORS
Radio Differential	Supports TT450 protocol/ Transparent Transmission Protocol, etc.
Directional Accuracy	Accuracy: 0.1° (1m baseline)
Inertial Navigation Accuracy	6°/h, 1m accuracy at 20-second decay rate, supports continuous autonomous navigation and surveying under bridges
IMU Update Rate	200Hz

Ⓜ www.toknav.cn ⓧ info@toknav.cn

Manufacturers may update parameters at any time, please refer to the latest product information.



Europe, North & South America
Tel & WhatsApp: +1 (323) 847-7713 (Ian)
Asia, Africa & Oceania
Tel & WhatsApp: +86 139 2607 5986 (Jeffrey)

Guangzhou Toksurvey Information Technology Co., Ltd
No. 9 Caipin Road, Building B, Room 801-6,
Huangpu District, Guangzhou, China